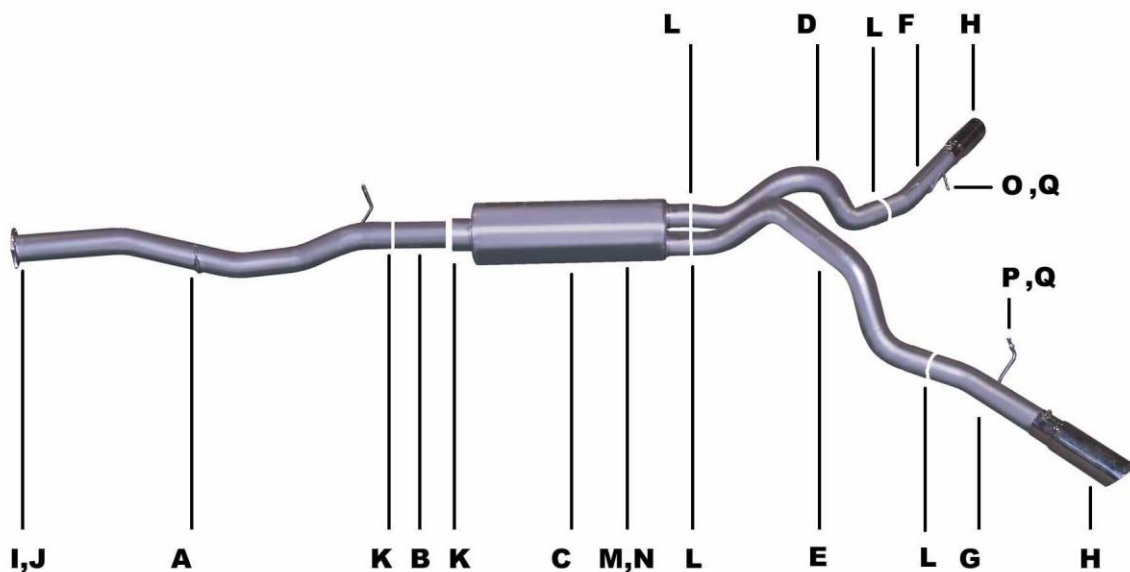




INSTRUCTION MANUAL
CAT-BACK EXTREME DUAL EXHAUST
CHEVY/GMC 2500HD/3500 6.6L DURAMAX DIESEL 2/4WD
CREW CAB / LONG BED
PART #5568



ITEM	PART #	QTY.	DESCRIPTION
A	700740	1	4.00" HeadPipe w/ Flange GP-533 & Welded Hanger
B	700748	1	4" x 12" Extension pipe
C	758400	1	SuperFlow Muffler
D	700705	1	3.00" Passenger Tail Pipe
E	700706	1	3.00" Driverside Tail Pipe
F	700746	1	3.00" Exitpipe w/ welded hangers
G	700747	1	3.00" Exitpipe w/ welded hanger
H	500379	2	4.00" Stainless Tip
I	BO-1038	1	Bolt Kit for Down-pipe
J	9252	1	Gasket for Down-pipe Flange
K	4171	2	4.00" Clamp
L	OHD300	4	3.00" Clamp
M	4247	1	Band Clamp w/ Weld Hanger
N	BO-1015	1	Bolt Kit for Band Clamp
O	4248	1	Pass. Rear Tailpipe hanger
P	4249	1	Driver Rear Tailpipe hanger
Q	4240	2	Rear hanger Rubber Grommets

WILL NOT FIT WITH FUEL TANK MOUNTED IN THE REAR CENTER FRAME

WILL NOT FIT WITH 5TH WHEEL TRAILER HITCH

THANK YOU FOR PURCHASING OUR GIBSON EXHAUST SYSTEM FOR YOUR VEHICLE. IF YOU NEED
 FURTHER ASSISTANCE, PLEASE DO NOT HESITATE TO CALL OUR TECHNICAL DEPT. AT
 (800) 528-3044, MONDAY THROUGH FRIDAY, 8:00 AM TO 5:00 PM.

INSTALLATION INSTRUCTIONS

WHEN INSTALLING THIS EXHAUST SYSTEM MAKE SURE TO USE PROPER SAFETY PRECAUTIONS. USE JACK STANDS WHEN UNDER THE TRUCK, SET THE PARKING BRAKE, BLOCK TIRES AND USE SAFETY GLASSES AND GLOVES.

DO NOT WORK WITH HOT PIPES!!!

SUGGESTED TOOLS:

17MM SOCKET & WRENCH, 9/16", 1/2" SOCKET & WRENCH, JACKSTAND, WD-40, HACKSAW
LAY OUT THE EXHAUST AND COMPARE PART NUMBERS WITH THE DRAWING.



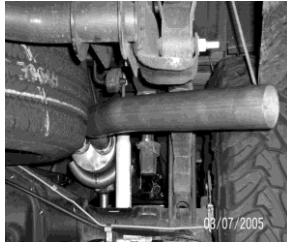
FOR EASIER REMOVAL OF THE STOCK MUFFLER CUT THE FACTORY TAILPIPE JUST BEHIND THE REAR MUFFLER HANGER AND REMOVE. LOCATE THE 4- BOLT FLANGE BEHIND THE FACTORY CONVERTER AND REMOVE THE CAT-BACK. USE WD-40 TO AID IN THE REMOVAL OF EXHAUST HANGERS



INSTALL PASSENGER TAILPIPE # D INTO MUFFLER OUTLET 1 1/2"-2". USE CLAMP # L TO SECURE PIPE TO MUFFLER OUTLET. **DO NOT TIGHTEN**



ATTACH HEADPIPE # A ONTO FACTORY EXISTING TURBO DOWNPIPE USING BOLT KIT# I AND GASKET #J. **DO NOT TIGHTEN.**



INSTALL PASSENGERSIDE EXIT PIPE #F ONTO TAILPIPE USING CLAMP # L TO SECURE TOGETHER. **DO NOT TIGHTEN.** INSERT WELDED HANGER INTO RUBBER GROMMET, ROTATE IT TO THE BEST FIT FOR YOUR VEHICLE.



BEFORE INSTALLING THE GIBSON MUFFLER INSTALL BAND CLAMP HANGER NUMBER #M LOOSELY INTO RUBBER GROMMET BACK FROM THE EXTENSION PIPE.



INSTALL DRIVERSIDE EXIT PIPE #G ONTO TAILPIPE. USE CLAMP #L TO SECURE TOGETHER. **DO NOT TIGHTEN.** INSERT WELDED HANGER INTO RUBBER GROMMET ROTATE TO THE BEST FIT FOR YOUR VEHICLE.



SLIP MUFFLER #C THROUGH THE BAND CLAMP INSTALL THE MUFFLER 1 1/2"- 2" ONTO PIPE #B. USE CLAMP # K TO SECURE MUFFLER TO EXTENSIONPIPE. **DO NOT TIGHTEN.** MAKE SURE MUFFLER OUTLETS ARE LEVEL.



INSTALL YOUR STAINLESS STEEL TIPS TO YOUR DESIRED LOOK AND CLAMP DOWN. WHEN EVERYTHING IS IN PLACE, FIRMLY TIGHTEN DOWN ALL THE BOLTS AND CLAMPS SECURELY STARTING FROM THE FRONT AND WORKING YOUR WAY BACK. THE SYSTEM WILL MOVE WHEN BEING TIGHTEND DOWN. WATCH FOR SHOCK CLEARANCE AND FRAME CLEARANCE. TO CLEAN YOUR STAINLESS STEEL TIPS USE A GOOD QUALITY STAINLESS CLEANER.



NEXT ON THE PASSENGERSIDE & DRIVERSIDE, REMOVE THE HITCH BOLT CLOSEST TO THE FRONT OF THE VEHICLE AND INSTALL REAR TAILPIPE HANGERS #O & #P W/ RUBBER GROMMETS #Q. LEAVE SNUG UNTIL EXIT PIPES ARE INSTALLED.



INSTALL DRIVERSIDE TAILPIPE # E INTO MUFFLER 1 1/2"-2". USE CLAMP #L TO SECURE PIPE TO MUFFLER OUTLET.

IF SYSTEM SEEMS LOOSE AFTER BEING TIGHTEND DOWN LOOSEN CLAMPS AND ROTATE 90 DEGREES AND RE-TIGHTEN

"MAKE SURE YOU HAVE A MINIMUM OF 1" CLEARANCE ON ALL PIPES FROM RUBBER BRAKE LINES, FUEL LINES, TIRES, SHOCKS, ETC..."