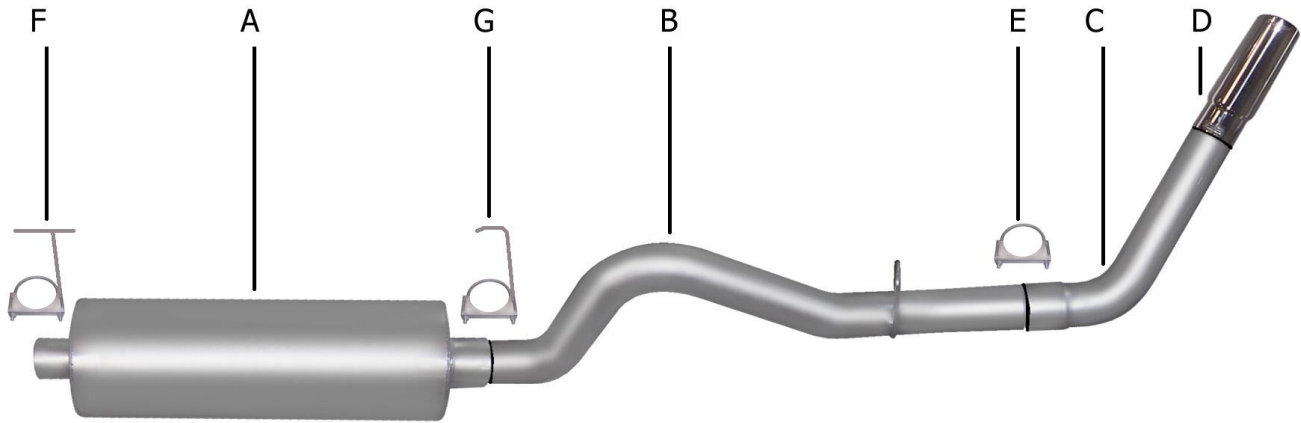




INSTRUCTION MANUAL
CAT-BACK STAINLESS SINGLE EXHAUST
DODGE DAKOTA TRUCK 3.9L-4.7L 2/4WD
DODGE DAKOTA TRUCK 5.9L- 5.9LRT 2/4WD
EXTENDED CAB, STANDARD CAB, SHORT BED
PART # 616590



ITEM	PART #	QUANTITY	DESCRIPTION
A	788702S-1	1	SUPERFLOW STAINLESS MUFFLER
B	100-500630S	1	3" STAINLESS OVERAXLE TAILPIPE
C	101-50032RS-6	1	3" STAINLESS TURNOUT PIPE
D	500360	1	3 1/2" STAINLESS STEEL TIP
E	OHD300	1	3" CLAMP
F	40101	1	FRONT MUFFLER HANGER
G	4128	1	REAR MUFFLER HANGER

Thank you for purchasing our GIBSON EXHAUST SYSTEM for your vehicle. If you need further assistance, please do not hesitate to call our Technical Department at 1-800-528-3044, Monday through Friday, 8:00AM to 5:00PM.

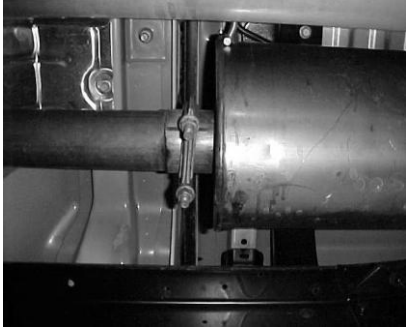
EXHAUST INSTALLATIONS # 616590

WHEN INSTALLING THIS EXHAUST SYSTEM, MAKE SURE TO USE PROPER SAFETY PRECAUTIONS. USE TECH STANDS TO SUPPORT YOUR TRUCK, SET PARKING BRAKE, AND BLOCK THE TIRES. USE SAFETY GLASSES. **DO NOT WORK WITH HOT PIPES.**

SUGGESTED TOOLS:

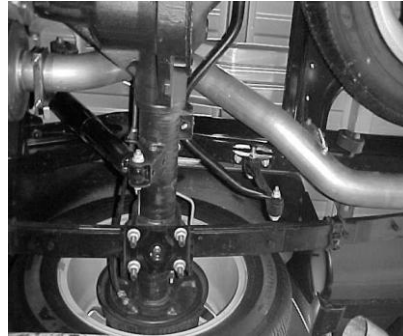
HACKSAW, JACKSTAND, 9/16" SOCKET, 1/2" WRENCH & SOCKET

LAYOUT THE EXHAUST SYSTEM ON THE FLOOR LIKE THE DRAWING AND COMPARE PART NUMBERS.

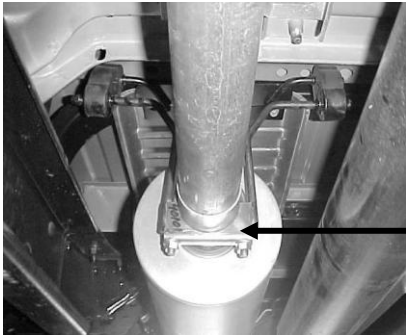


DO NOT REMOVE YOUR STOCK HEADPIPE.

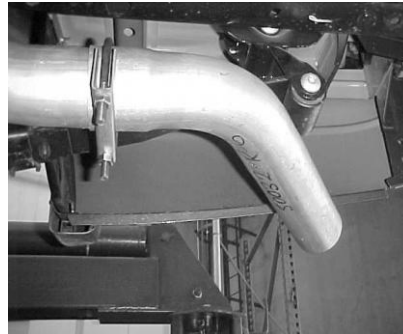
UNCLAMP YOUR EXHAUST IN FRONT OF THE STOCK MUFFLER AND REMOVE. FOR EASIER REMOVAL OF THE FACTORY EXHAUST CUT BEHIND THE REAR OF THE MUFFLER. USE WD-40 ON ALL HANGERS & BOLTS. LEAVE ALL RUBBER GROMMETS IN PLACE.



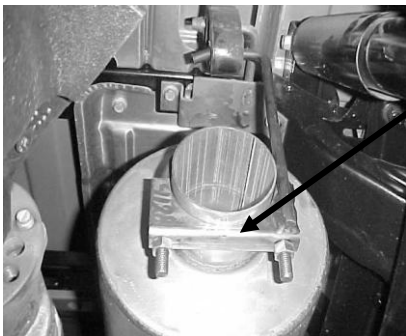
INSTALL OVERAXLE TAILPIPE #B AND CONNECT TO THE MUFFLER USING HANGER #G. INSERT WELDED HANGER INTO RUBBER GROMMETS.



INSTALL MUFFLER #A ONTO THE STOCK HEADPIPE. SUPPORT THE MUFFLER USING A JACK STAND. INSTALL FRONT MUFFLER HANGER #F ONTO THE INLET OF THE MUFFLER. MUFFLER INLET IS LOOKING INTO LOUVERS.



NEXT CONNECT THE TURN OUT PIPE #C TO THE OVERAXLE PIPE USING CLAMP #E. DO NOT TIGHTEN.



INSTALL REAR MUFFLER HANGER #G TO OUTLET OF MUFFLER. INSERT WELDED HANGER INTO RUBBER GROMMET. THE VERTICAL BAR ON THE HANGER IS ON THE PASSENGER SIDE. DO NOT TIGHTEN.



WHEN YOU HAVE EVERYTHING IN PLACE TIGHTEN ALL BOLTS AND CLAMPS. INSTALL STAINLESS STEEL TIP. TO CLEAN TIP USE ALUMINUM OR STAINLESS STEEL CLEANER.

MAKE SURE YOU HAVE AT LEAST A 1" CLEARANCE FROM ALL BRAKE LINES, FUEL LINES, SHOCKS, TIRES, ETC.