



**INSTALLATION INSTRUCTIONS  
RESONATOR REPLACEMENT  
Ford F-150 5.0L  
CREW CAB SHORT BED**

**PART # 619641**



Item	Part Number	Quantity	Description
A	999701177S	1	3" RESONATOR PIPE
B	GP-529	1	FLANGE
C	5758	1	2.75" U-BOLT

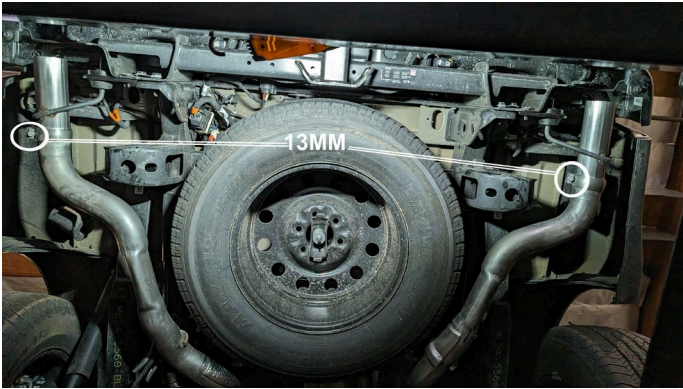
Thank you for purchasing our Gibson exhaust system for your vehicle. If you need further assistance, please do not hesitate to call our technical dept at (800) 528-3044 Monday through Friday, 8:00 am to 5:00 pm. PST 0106

## CAREFULLY READ INSTRUCTIONS BEFORE INSTALLING PRODUCT

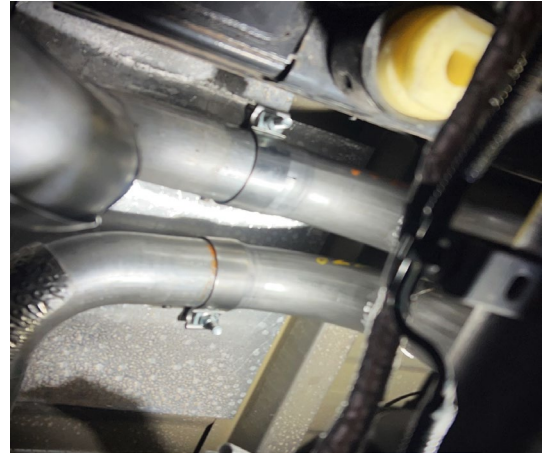
When installing this exhaust system make sure to use proper safety precautions. Therefore, make sure instructions are thoroughly read and understood before attempting to install. Use jack stands when working under the vehicle, set parking brake, block tires and use safety glasses and gloves. Allow exhaust system to cool before attempting installation. Severe injury or burns could occur if safety measures are not taken.

### **SUGGESTED TOOLS:** 13MM SOCKET, 15MM SOCKET, 5/16" DRILL BIT, WD-40

**1.** Disconnect the negative battery cable before removal of OEM exhaust. This will allow the computer to reset and recognize the new exhaust. Lay out the exhaust on the floor so it looks like the drawing and compare parts with manual.



**1)** FIRST, REMOVE BOTH DRIVER AND PASSENGER SIDE FACTORY TIPS. THEY ARE HELD ON BY A 13MM BOLT.



**2)** SECOND, LOOSEN BOTH 15MM CLAMPS LOCATED ABOVE THE AXLE THEN REMOVE BOTH OVER-AXLE PIPES.

**3)** THIRD, LOOSEN THE 15MM CLAMP ATTACHING THE MUFFLER TO THE HEADPIPE, THEN REMOVE THE MUFFLER ASSEMBLY.



**4)** LASTLY, REMOVE FACTORY HEADPIPE THEN DRILL OUT FACTORY BAND CLAMP WITH A 1/4" BIT (**THIS WILL BE RE-USED**), IF YOU DON'T HAVE MEANS TO DRILL FACTORY CLAMP YOU MAY USE SUPPLIED CLAMP #C. THEN, INSTAL HEADPIPE #A USING SUPPLIED FLANGE #B.

GIBSON EXHAUST systems are designed on a factory stock vehicle. Any aftermarket products installed could increase the sound levels of this Exhaust. Make sure there is a 1" clearance from ALL rubber brake lines, shock boots, fuel lines, tires, etc. to prevent heat related damage or fire.