

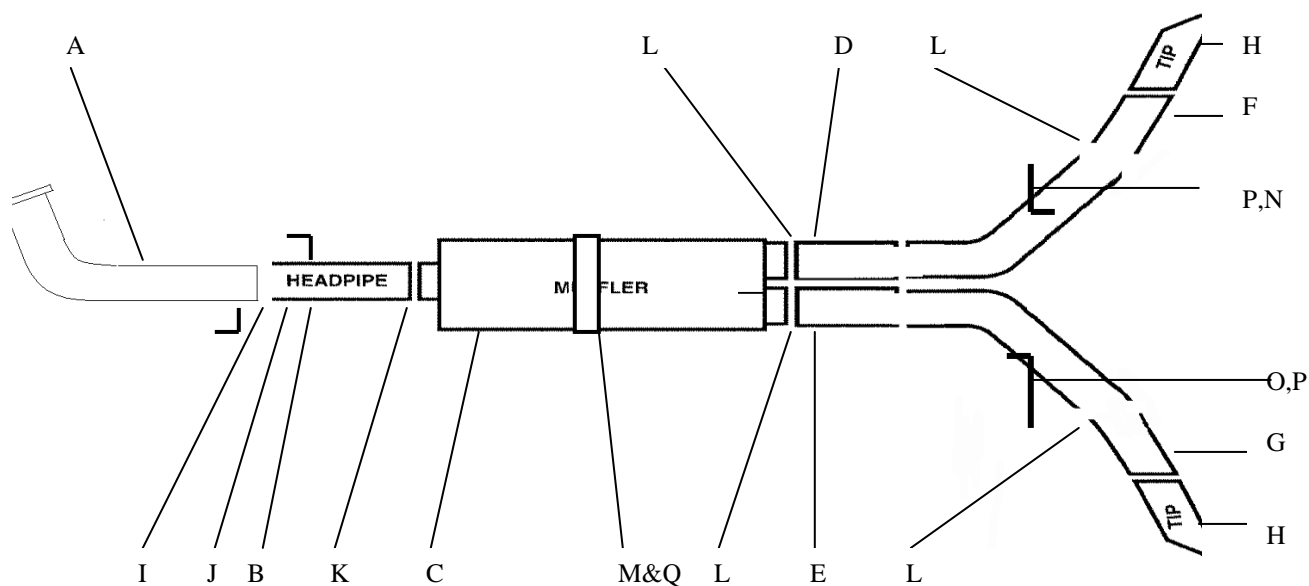


# INSTRUCTION MANUAL

## CAT-BACK STAINLESS EXTREME DUAL EXHAUST W/ DOWNPIPE

CHEVY/GMC 2500HD/3500 TRUCK 6.6L DURAMAX DIESEL  
CREW CAB / SHORT BED

**PART #65565**



ITEM	PART #	QTY.	DESCRIPTION
A	891-700633S	1	4.00" Stainless Down-Pipe w/ Flange GP-533 & Welded Hanger
B	957-700704S	1	4.00" Stainless HeadPipe w/ Flange GP-533 & Welded Hanger
C	758400S	1	Stainless SuperFlow Muffler
D	958-700705S	1	3.00" Stainless Pass. Over-axle Pipe
E	959-700706S	1	3.00" Stainless Driver Over-axle Pipe
F	960-700707S	1	3.00" Stainless Exit-pipe w/ welded hanger
G	961-700708S	1	3.00" Stainless Exit-pipe w/ welded hanger
H	500379	2	4.00" Stainless Tip
I	BO-1038	1	Bolt Kit for Down-pipe
J	9252	1	Gasket for Down-pipe Flange
K	4171	1	4.00" Clamp
L	OHD300	4	3.00" Clamp
M	4247	1	Band Clamp w/ Weld Hanger
N	BO-1015	1	Bolt Kit for Band Clamp
O	4248	1	Pass. Rear Tailpipe hanger
P	4249	1	Driver Rear Tailpipe hanger
Q	4240	2	Rear hanger Rubber Grommets

**WILL NOT FIT WITH FUEL TANK MOUNTED IN THE REAR CENTER FRAME**

**WILL NOT FIT WITH 5<sup>TH</sup> WHEEL TRAILER HITCH**

THANK YOU FOR PURCHASING OUR GIBSON EXHAUST SYSTEM FOR YOUR VEHICLE. IF YOU  
NEED FURTHER ASSISTANCE, PLEASE DO NOT HESITATE TO CALL OUR TECHNICAL DEPT. AT  
(800) 528-3044, MONDAY THROUGH FRIDAY, 8:00 AM TO 5:00 PM.

# **DOWNPIPE INSTALLATION**

When installing this exhaust system make sure to use proper safety precautions. Use jack stands when under the truck, set parking brake, block tires and use safety glasses and gloves.

## **SUGGESTED TOOLS**

12MM, 11MM, 15MM SOCKET AND WRENCH, HACKSAW OR SAWZALL, 9/16" SOCKET AND WRENCH, WD-40, JACK STAND



TO INSTALL YOUR GIBSON DOWN PIPE YOU NEED TO REMOVE YOUR STOCK EXHAUST FROM THE CAT BACK. REMOVE IT FROM THE 4 BOLT FLANGE IN FRONT OF YOUR STOCK MUFFLER. CUT OFF YOUR STOCK TAILPIPE FOR EASIER REMOVAL. LEAVE ALL RUBBER GROMMETS IN PLACE. USE WD-40 TO AID IN REMOVAL OF EXHAUST AND HANGER MOUNTS.



INSTALL PIPE #A ONTO TURBO. SECURE TURBO USING FACTORY CLAMP. INSERT WELDED HANGER INTO RUBBER GROMMET. SNUG TURBO CLAMP BUT **DO NOT TIGHTEN**



NOW CUT YOUR STOCK DOWN PIPE BELOW THE BEND AS SEEN IN THE PICTURE. NOW REMOVE YOUR STOCK DOWNPIPE.



INSTALL PIPE #B ONTO DOWN PIPE #A. USING GASKET #J AND BOLT KIT #I. INSERT WELDED HANGER INTO RUBBER GROMMET.



REMOVE THE REMAINING STOCK DOWN PIPE BY UNCLAMPING IT FROM THE TURBO HOUSING. USE A 11MM SOCKET OR WRENCH TO REMOVE YOUR STOCK PIPE THROUGH THE BOTTOM. DO NOT DISCARD THE STOCK CLAMP YOU WILL NEED TO RE-USE IT.

**NOW, INSTALL YOUR CAT BACK EXHAUST SYSTEM ACCORDING TO THE INSTRUCTIONS PROVIDED IN STEP 2. DO NOT TIGHTEN UNTIL ENTIRE SYSTEM IS INSTALLED.**

# INSTALLATION INSTRUCTIONS

WHEN INSTALLING THIS EXHAUST SYSTEM MAKE SURE TO USE PROPER SAFETY PRECAUTIONS. USE JACK STANDS WHEN UNDER THE TRUCK, SET THE PARKING BRAKE, BLOCK TIRES AND USE SAFETY GLASSES AND GLOVES.

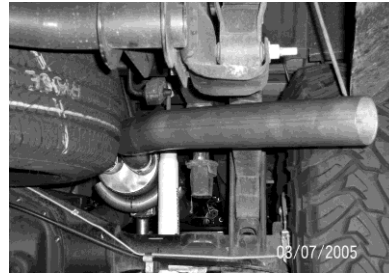
**DO NOT WORK WITH HOT PIPES!!!**

## SUGGESTED TOOLS:

17MM SOCKET & WRENCH, 9/16", 1/2" SOCKET & WRENCH, JACKSTAND, WD-40, HACKSAW  
**LAY OUT THE EXHAUST AND COMPARE PART NUMBERS WITH THE DRAWING.**



INSTALL MUFFLER #C 1 1/2"-2" ONTO PIPE #B. USE CLAMP #K TO SECURE MUFFLER TO PIPE. **DO NOT TIGHTEN.** MAKE SURE MUFFLER OUTLETS ARE LEVEL.



INSTALL PASSENGERSIDE EXIT PIPE #F ONTO TAILPIPE USING CLAMP # L TO SECURE TOGETHER. **DO NOT TIGHTEN.** INSERT WELDED HANGER INTO RUBBER GROMMET, ROTATE IT TO THE BEST FIT FOR YOUR VEHICLE.



INSTALL PASS. SIDE OVER-AXLE PIPE # D INTO MUFFLER OUTLET 1 1/2"-2". USE CLAMP # L TO SECURE PIPE TO MUFFLER OUTLET. **DO NOT TIGHTEN**



INSTALL DRIVERSIDE EXIT PIPE #G ONTO TAILPIPE. USE CLAMP #L TO SECURE TOGETHER. **DO NOT TIGHTEN.** INSERT WELDED HANGER INTO RUBBER GROMMET ROTATE TO THE BEST FIT FOR YOUR VEHICLE.



INSTALL DRIVERSIDE OVERAXLEPIPE # E INTO MUFFLER 1 1/2"-2". USE CLAMP #L TO SECURE PIPE TO MUFFLER OUTLET. **DO NOT TIGHTEN**



INSTALL YOUR STAINLESS STEEL TIPS TO YOUR DESIRED LOOK AND CLAMP DOWN. WHEN EVERYTHING IS IN PLACE, FIRMLY TIGHTEN DOWN ALL THE BOLTS AND CLAMPS SECURELY STARTING FROM THE FRONT AND WORKING YOUR WAY BACK. TO CLEAN YOUR STAINLESS STEEL TIPS USE A GOOD QUALITY STAINLESS CLEANER.



NEXT ON THE PASSENGERSIDE & DRIVERSIDE, REMOVE THE HITCH BOLT CLOSEST TO THE FRONT OF THE VEHICLE AND INSTALL REAR TAILPIPE HANGERS #N & O W/ RUBBER GROMMETS #P. LEAVE SNUG UNTIL EXIT PIPES ARE INSTALLED.

**"MAKE SURE YOU HAVE A MINIMUM OF 1" CLEARANCE ON ALL PIPES FROM RUBBER BRAKE LINES, FUEL LINES, TIRES, SHOCKS, ETC..."**