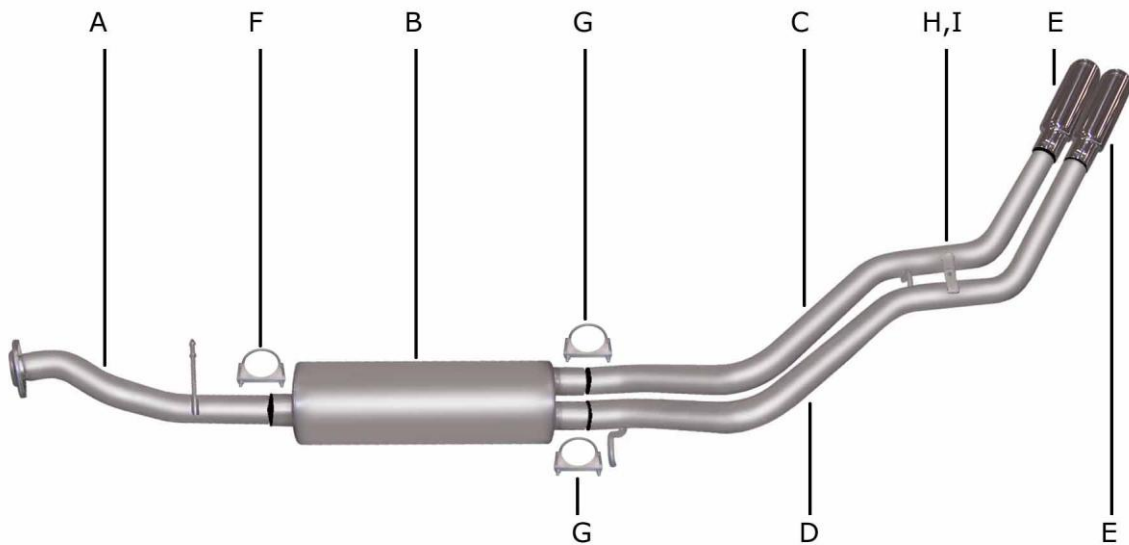




INSTRUCTION MANUAL
DEEGAN 38 DUAL STAINLESS SPORT TRUCK EXHAUST
CHEVY SILVERADO/SIERRA 1500 TRUCK
4.3L-4.8L-5.3L 2/4WD
STANDARD CAB, SHORT BED
PART # 65700D



ITEM	PART #	QTY	DESCRIPTION
A	326-700197S	1	STAINLESS HEADPIPE W/FLANGE #GP-115
B	758250S	1	STAINLESS SUPERFLOW MUFFLER
C	331-700191S	1	2½" S/S PASSENGER SIDE OVERAXLE PIPE
D	332-700190S	1	2½" S/S DRIVER SIDE OVERAXLE PIPE
E	500640-B	2	4" BLACK SS TIP
F	OHD300	1	3" CLAMP
G	5757	2	2½" CLAMP
H	BO-906	1	BOLT KIT FOR TAILPIPE
I	4137	1	SPARE TIRE BRACKET
J	DE-13	2	DEEGAN 38 BADGE

Thank you for purchasing our GIBSON EXHAUST SYSTEM for your vehicle. If you need further assistance, please do not hesitate to call our Technical Department at (800) 528-3044, Monday through Friday, 8:00 am to 5:00 pm.
54X20X12

EXHAUST INSTALLATION #65700D

When installing this exhaust system make sure to use proper safety precautions. Use jack stands when under the truck, set parking brake, block tires and use safety glasses and gloves.

DO NOT WORK WITH HOT PIPES!

SUGGESTED TOOLS:

1/2", 9/16", 15mm wrench and socket, WD-40, Hacksaw, Jack Stand



Lay out the exhaust on the floor so it looks like the drawing and compare parts with manual. To remove the stock exhaust un-bolt it from the flange located in front of the muffler. **You will re-use your stock hardware.** Leave all rubber grommets in place. Use WD-40 to aid in removal of exhaust and the hangers. Cut your stock tailpipe off just behind the muffler.



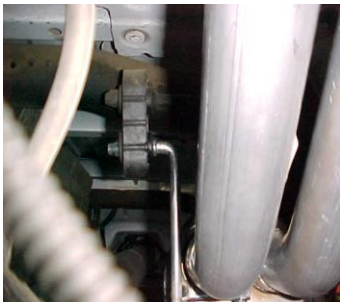
Install the driver side over axle tailpipe # D into the muffler. Use clamp # F to secure tailpipe to muffler. Do not tighten. Insert hanger into rubber grommet.



Install head pipe # A onto you're existing stock flange re-using the factory hardware. Use a jack stand to support the converter. Do not tighten. Insert welded hanger into rubber grommet.



Install passenger side over axle tailpipe # C into muffler and attach using clamp # G. Insert welded hanger into rubber grommet. Use bolt kit # H to attach the tailpipes together. Do not tighten. YOU MAY NEED TO LOOSEN YOUR SPARE TIRE & PUSH TOWRDS DRIVER SIDE & RE-TIGHTEN



Install muffler onto head pipe 1-1/2" to 2" with the louvers facing towards the converter. Use a jack stand to support the muffler. Use clamp # F to secure the muffler to the head pipe. Do not tighten.



INSTALL YOUR BLACK CERAMIC COATED TIPS. PROCEED TO THE NEXT SHEET ON HOW TO INSTALL YOUR DEEGAN 38 BADGES. AFTER YOU HAVE CHECKED FOR CLEARANCES GO BACK AND TIGHTEN ALL NUTS, BOLTS AND CLAMPS.

MAKE SURE YOU HAVE A 1" CLEARANCE ON ALL RUBBER BRAKE LINES, SHOCK BOOTS, TIRE, FUEL LINES, ETC.