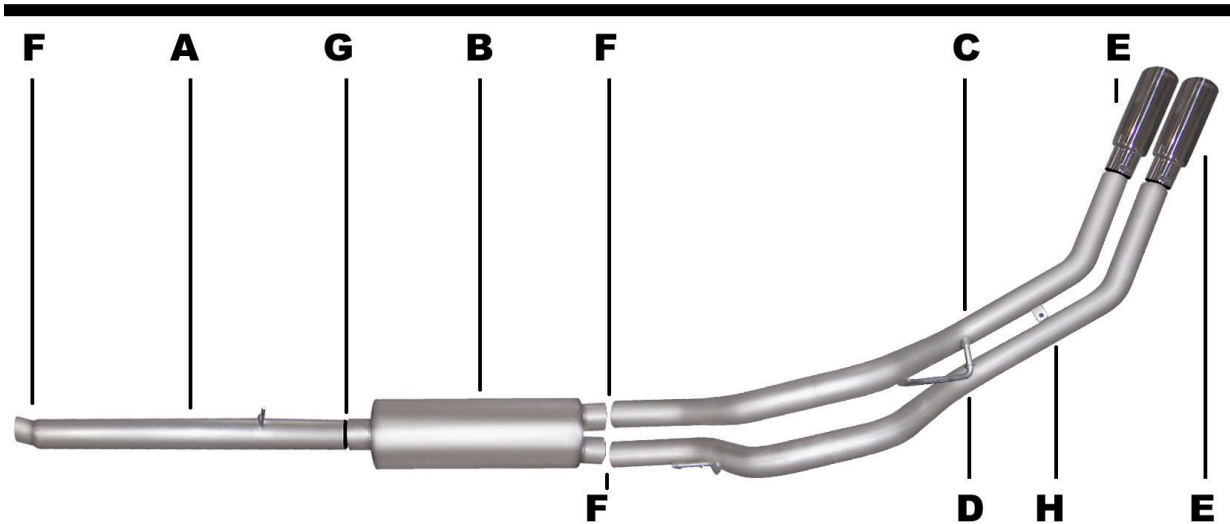




PERFORMANCE EXHAUST SYSTEMS

INSTRUCTION MANUAL CAT-BACK STAINLESS DEEGAN 38 DUAL SPORT EXHAUST

Dodge Dakota Truck 3.7L-4.7L
QuadCab, Short Bed 2/4wd, ClubCab, Short Bed 2wd
Mitsubishi Raider 3.7L-4.7L
Extended & Double Cab, Short Bed 2wd
PART# 66538D



Item	Part #	Quantity	Description
A	938-700713S	1	3.00" Stainless Headpipe
B	789800S	1	SuperFlow Stainless muffler
C	944-700717S	1	2.50" Stainless Passenger Side tailpipe
D	936-700718S	1	2.50" Stainless Driver Side tailpipe
E	500640-B	2	4" BLACK SS TIP
F	5757	3	2.50" Clamp(s)
G	OHD300	1	3.00" Clamp
H	BO-906	1	Bolt kit for tailpipes
I	DE-13	2	DEEGAN 38 BADGE

Thank you for purchasing our GIBSON EXHAUST SYSTEM for your vehicle. If you need further assistance, please do not hesitate to call our Technical Department at 1-800-528-3044, Monday through Friday, 8:00 am to 5:00 PM

60X22X13

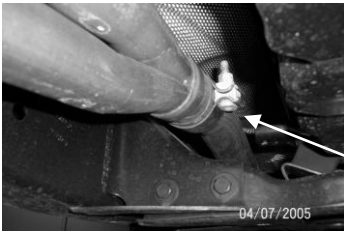
EXHAUST INSTALLATION #66538D

When installing this exhaust system make sure to use proper safety precautions. Use jack stands when under the truck, set parking brake, block tires and use safety glasses and gloves.

DO NOT WORK WITH HOT PIPES!

SUGGESTED TOOLS:

1/2", 9/16", 15mm wrench and socket, WD-40, Hacksaw, Jack Stand



Lay out the exhaust on the floor so it looks like the drawing and compare parts with manual. To remove the stock exhaust un-bolt it from the tailpipe and then remove it, next un-bolt the clamp that is located after the Y-pipe. Leave all rubber grommets in place. Use WD-40 to aid in removal of exhaust and the hangers.



Install the passenger side over axle tailpipe # C into the muffler (1-1/2" to 2"). Use clamp # F to secure tailpipe to muffler. **Do not tighten.**



Install head pipe # A onto you're existing stock front pipe and secure with clamp # F . Insert welded hanger into rubber grommet. **Do not tighten.**



Install driver side over axle tailpipe # D into muffler and attach using clamp # F . Use bolt kit # H to attach the tailpipes together. **Do not tighten.** The driver side tailpipe tab will be on the bottom.



Install muffler #B onto head pipe 1-1/2" to 2" with the louvers facing towards the converter. Use a jack stand to support the muffler (make sure its level). Use clamp #G to secure the muffler to the head pipe. **Do not tighten.** Muffler inlet is looking into the louvers.



INSTALL YOUR BLACK CERAMIC COATED TIPS. PROCEED TO THE NEXT SHEET ON HOW TO INSTALL YOUR DEEGAN 38 BADGES. AFTER YOU HAVE CHECKED FOR CLEARANCES GO BACK AND TIGHTEN ALL NUTS, BOLTS AND CLAMPS.

MAKE SURE YOU HAVE A 1" CLEARANCE ON ALL RUBBER BRAKE LINES, SHOCK BOOTS, TIRE, FUEL LINES, ETC.