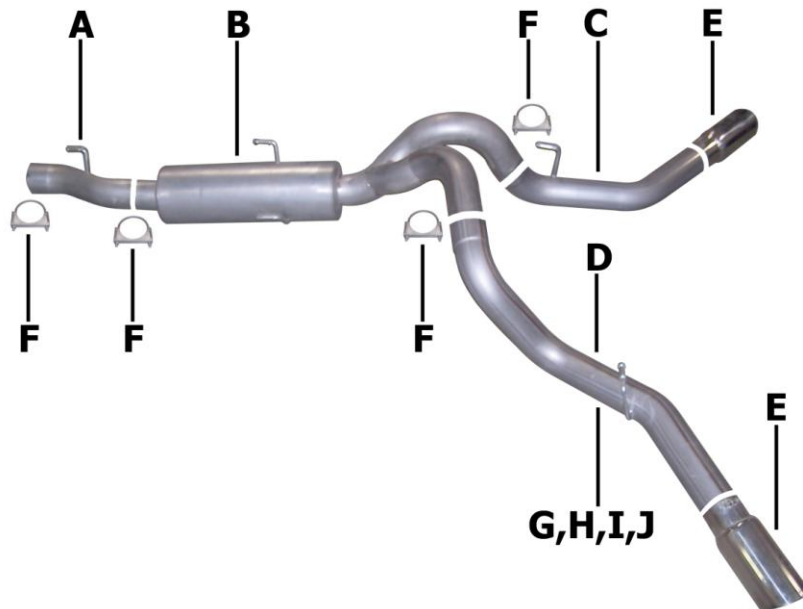




Installation Instructions

Cat-Back Stainless Dual Extreme Exhaust
Dodge Ram 2500/3500 5.9L H.O. Diesel 2/4wd
Quad Cab, Short & Long Bed

Part #67302



ITEM	PART	QUANTITY	DESCRIPTION
A	1252-701010S	1	4" Stainless Headpipe
B	788040S-1	1	Stainless Superflow SFT Muffler Assembly
C	1253-701011S	1	4" Stainless Passenger Side Tailpipe
D	1254-701012S	1	4" Stainless Driver Side Tailpipe
E	500425	2	5" Stainless Slash Tip
F	4171	4	4" Clamp
G	40107	1	Driver Side Tailpipe Hanger
H	4240	1	Rubber Grommet
I	BO-1065	1	Bolt Kit
J	ZIP	4	Zip Ties

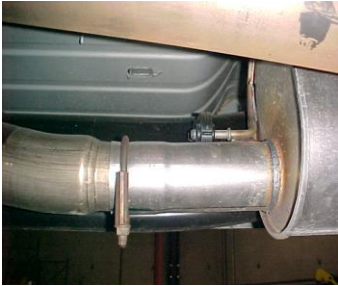
Thank you for purchasing our Gibson Exhaust System for your vehicle.
If you need further assistance, please do not hesitate to call our technical department at
(800) 528 -3044 Monday through Friday, 8am to 5 pm. 01/11

Installation Instructions #67302

When installing this exhaust system make sure to use proper safety precautions. Use jack stands when working under the vehicle, set parking brake, block tires and use safety glasses and gloves. Allow exhaust to cool before attempting installation. Severe injury or burns could occur if safety measures are not taken.

SUGGESTED TOOLS: 1/2", 9/16", 15mm wrenches & sockets, WD-40, hacksaw, jack stands

1. Disconnect the negative battery cable before removal of OEM exhaust. This will allow the computer to reset and recognize the new exhaust. Lay out the exhaust on the floor so it looks like the drawing and compare parts with manual.



2. Remove your stock exhaust by removing the clamp located in front of your stock muffler. Disengage the welded hangers from the OEM rubber grommets. Use WD-40 to aid in this process. Do not damage or remove the rubber grommets as you will reuse them to mount your new system. Now, cut off tailpipe and remove exhaust.



6. Install the driver side tailpipe hanger onto frame. Measure 16.5" from rear of frame. Use the slot in the frame and hardware kit provided. Install rubber grommet on rear hanger.



3. Install headpipe #A onto your existing stock front pipe and secure with clamp #F. Insert welded hanger into rubber grommet.



7. Install the driver side tailpipe #D into the muffler assembly 1.5-2". Use clamp #J to secure. Do not tighten. Insert welded hanger into rubber grommet.



4. Install muffler assembly #B onto headpipe 1.5-2" with the louvers facing towards the converter. Use a jack stand to support the muffler. Use clamp #F to secure the muffler to the headpipe. Do not tighten. Insert welded hangers into rubber grommets.



9. Zip tie brake lines and fuel hoses away from pipes. (see picture)



5. Install the passenger side tailpipe #C to the muffler assembly 1.5-2". Use clamp #F to secure. Insert welded hanger into rubber grommet.



10. Install stainless steel tips. Clamp down. When you have everything in place, firmly tighten all bolts and clamps down securely. Use stainless steel cleaner weekly to prevent tip from discoloration. Inspect all fasteners after 25-50 miles of operation and re-tighten as necessary.



GIBSON EXHAUST systems are designed on a factory stock vehicle. Any aftermarket products installed could increase the sound levels of the exhaust.

Make sure there is a 1" clearance from ALL rubber brake lines, shock boots, lines, tires, etc. to prevent heat related damage or fire.