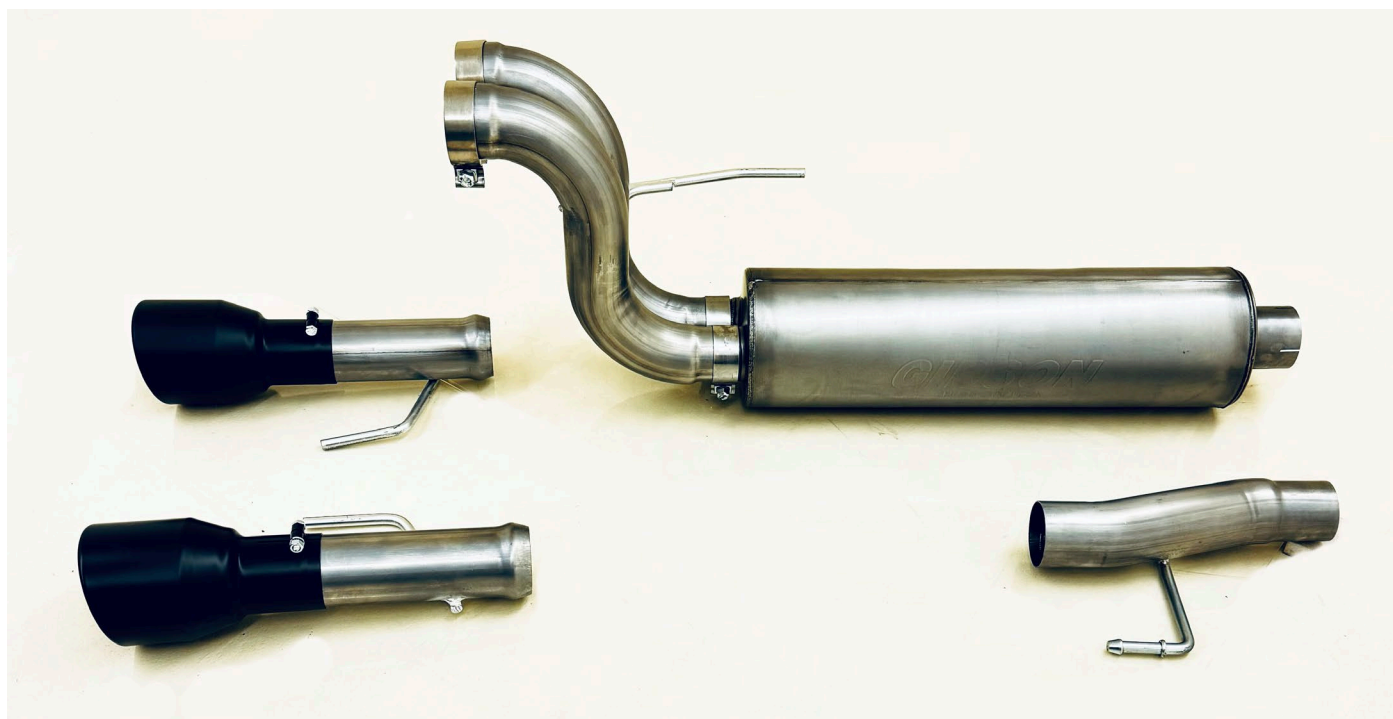




**INSTALLATION INSTRUCTIONS**  
**MUFFLER AND TIP REPLACEMENT KIT**  
**Ford F-150 5.0L, CREW CAB SHORT BED**  
**(FACTORY DUAL TIP)**

**PART # 69226B**



Item	Part Number	Quantity	Description
A	999701098S	1	3" HEADPIPE
B	789800SV	1	SFT MUFFLER
C	999701171S	1	DRIVER SIDE OVER-AXLE
D	999701172S	1	PASSENGER SIDE OVER-AXLE
E	999701173S	1	DRIVER SIDE EXIT PIPE
F	999701174S	1	PASSENGER SIDE EXIT PIPE
G	5763	3	3" BAND CLAMP
H	5762	2	2.5" BAND CLAMP
I	500687-B	2	5" ROLLED ROUND TIP

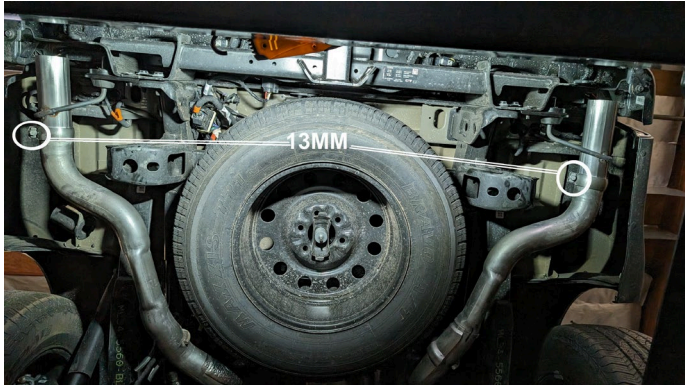
Thank you for purchasing our Gibson exhaust system for your vehicle. If you need further assistance, please do not hesitate to call our technical dept at (800) 528-3044 Monday through Friday, 8:00 am to 5:00 pm. PST 0424

## CAREFULLY READ INSTRUCTIONS BEFORE INSTALLING PRODUCT

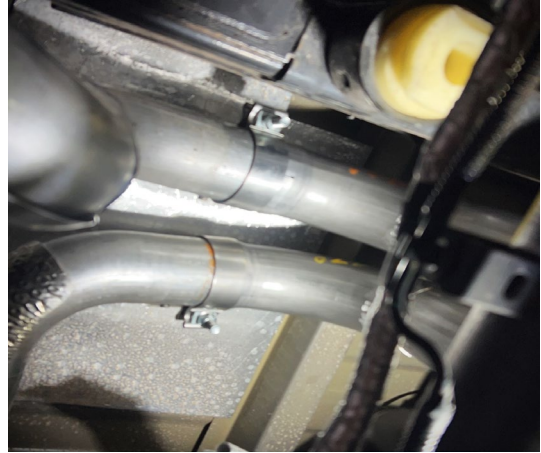
When installing this exhaust system make sure to use proper safety precautions. Therefore, make sure instructions are thoroughly read and understood before attempting to install. Use jack stands when working under the vehicle, set parking brake, block tires and use safety glasses and gloves. Allow exhaust system to cool before attempting installation. Severe injury or burns could occur if safety measures are not taken.

### **SUGGESTED TOOLS:** 15MM SOCKET, 16MM SOCKET, WD-40,

**1.** Disconnect the negative battery cable before removal of OEM exhaust. This will allow the computer to reset and recognize the new exhaust. Lay out the exhaust on the floor so it looks like the drawing and compare parts with manual.



**1)** FIRST, REMOVE BOTH DRIVER AND PASSENGER SIDE FACTORY TIPS. THEY ARE HELD ON BY A 13MM BOLT.



**2)** SECOND, LOOSEN BOTH 15MM CLAMPS LOCATED ABOVE THE AXLE THEN REMOVE BOTH OVER-AXLE PIPES.



**3)** THIRD, LOOSEN THE 15MM CLAMP ATTACHING THE MUFFLER TO THE HEADPIPE, THEN REMOVE THE MUFFLER ASSEMBLY. ONCE REMOVED, INSTALL HEADPIPE **#A** ALONG WITH MUFFLER **#B** USING CLAMP **#G**. (**SNUG DOWN CLAMP, DON'T TIGHTEN**)



**4)** LASTLY, INSTALL BOTH GIBSON O/A PIPES **#C & #D** USING CLAMPS **#H** (**SNUG DOWN, DON'T TIGHTEN**). ONCE IN PLACE RE-INSTALL FACTORY O/A PIPES ALONG WITH GIBSON EXIT PIPES **#E & #F**. (SNUG ALL CLAMPS TO ALLOW FOR SOME MOVEMENT). INSTALL TIPS **#I** AND ADJUST KIT UNTIL TIPS ARE LOCATED IN CORRECT SPOT. (THIS KIT HAS A LOT OF ADJUSTMENT)

GIBSON EXHAUST systems are designed on a factory stock vehicle. Any aftermarket products installed could increase the sound levels of this Exhaust. Make sure there is a 1" clearance from ALL rubber brake lines, shock boots, fuel lines, tires, etc to prevent heat related damage or fire.