



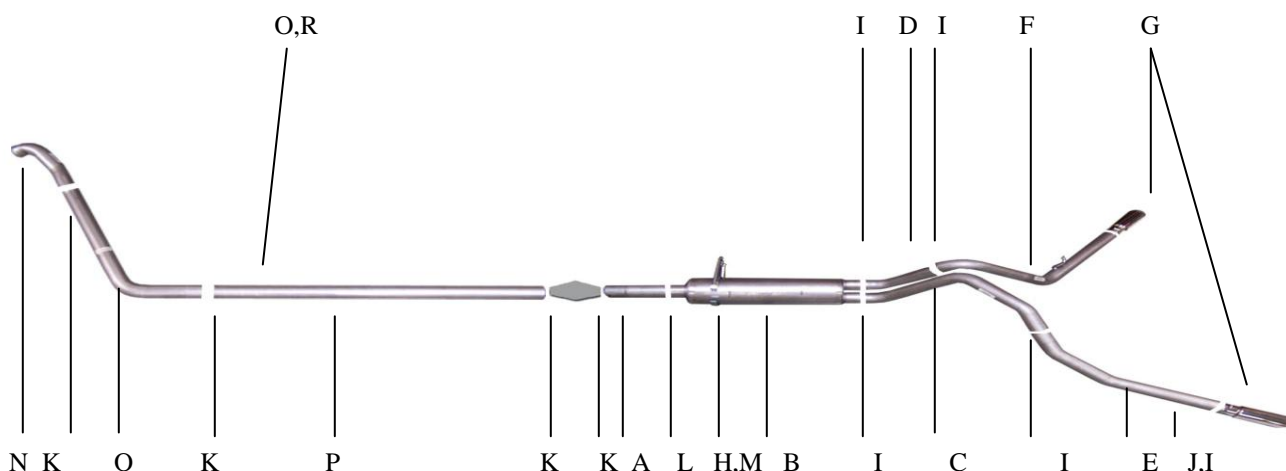
INSTRUCTION MANUAL

CAT-BACK EXTREME DUAL EXHAUST W/DOWNSPIPE

FORD F250, F350 TRUCK 7.3L, POWER STROKE DIESEL, 2/4WD

EXTENDED CAB & CREW CAB-SHORT & LONG BED

PART # 9706



ITEM	PART #	QUANTITY	DESCRIPTION
A	700355	1	4" HEADPIPE
B	758400	1	SUPERFLOW MUFFLER
C	700356	1	3" FRONT DRIVERSIDE TAILPIPE
D	700357	1	3" FRONT PASSENGER SIDE TAILPIPE
E	700358	1	3" DRIVERSIDE OVERAXLE TAILPIPE
F	700359	1	3" PASS. SIDE OVERAXLE TAILPIPE
G	500379	2	4" STAINLESS TIP
H	4168	1	8" BAND CLAMP
I	OHD300	5	3" CLAMP
J	08269	1	10" HANGER
J	BO-101	1	BOLT KIT FOR 10" HANGER
K	4170	4	3-1/2" CLAMP
L	4169	1	FRONT MUFFLER HANGER
M	BO-1015	1	BOLT KIT FOR BAND CLAMP# 4168
N	700477	1	3.5" DOWN PIPE W/FLAIR
O	700478	1	3.5" DOWN PIPE
P	700479	1	3.5" STRAIGHT DOWN PIPE
Q	4211	1	3.5" HANGER
R	4212	1	3.5" HANGER

WILL NOT FIT WITH FUEL TANK MOUNTED IN THE REAR CENTER FRAME
WILL NOT FIT WITH 5TH WHEEL TRAILER HITCH

DOWNPIPE INSTALLATION

When installing this exhaust system make sure to use proper safety precautions. Use jack stands when under the truck, set parking brake, block tires and use safety glasses and gloves.

SUGGESTED TOOLS

12MM, 15MM SOCKET AND WRENCH, HACKSAW OR SAWZALL, 9/16" SOCKET AND WRENCH, WD-40, JACK STAND



LAY OUT THE EXHAUST ON THE FLOOR SO IT LOOKS LIKE THE DRAWING AND COMPARE PARTS WITH MANUAL. TO REMOVE THE STOCK EXHAUST REMOVE IT FROM THE CLAMP LOCATED JUST IN FRONT OF THE MUFFLER. YOU MAY NEED TO HEAT IT UP FOR EASIER REMOVAL. LEAVE ALL RUBBER GROMMETS IN PLACE. USE WD-40 TO AID IN THE REMOVAL OF EXHAUST AND HANGERS.



INSTALL DOWN PIPE #O ONTO PIPE #N. USE CLAMP # K TO SECURE PIPES TOGETHER. DO NOT TIGHTEN.

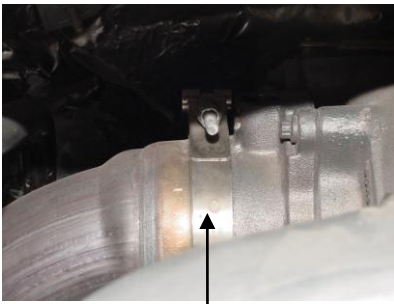


CROSS MEMBER

CUT YOUR STOCK DOWN PIPE OFF JUST IN FRONT OF YOUR CROSS MEMBER.



INSTALL THE STRAIGHT PIPE # P ONTO PIPE # O. USE CLAMP # K TO SECURE. DO NOT TIGHTEN.



STOCK CLAMP

NEXT, REMOVE STOCK DOWN PIPE PIECE FROM THE TURBO USING A 12MM SOCKET OR WRENCH. DO NOT DISGAURD FACTORY CLAMP YOU WILL RE-USE IT.



NEXT INSTALL DOWN PIPE HANGERS # Q AND # R . INSERT HANGERS INTO RUBBER GROMMETS. DO NOT TIGHTEN.



INSTALL DOWN PIPE #N ONTO TURBO USING YOUR FACORY CLAMP. LEAVE LOOSE. DO NOT TIGHTEN.



AFTER THIS STEP IS DONE, INSTALL YOUR CAT-BACK SYSTEM THEN YOU WILL ADJUST AND TIGHTEN ALL CLAMPS.

INSTALLATION INSTRUCTIONS

WHEN INSTALLING THIS EXHAUST SYSTEM MAKE SURE TO USE PROPER SAFETY PRECAUTIONS. USE JACK STANDS WHEN UNDER THE TRUCK, SET THE PARKING BRAKE, BLOCK TIRES AND USE SAFETY GLASSES AND GLOVES.

DO NOT WORK WITH HOT PIPES!!!

SUGGESTED TOOLS:

17MM SOCKET & WRENCH, 9/16", 1/2" SOCKET & WRENCH, JACKSTAND, WD-40, HACKSAW

LAY OUT THE EXHAUST AND COMPARE PART NUMBERS WITH THE DRAWING.



1. TO REMOVE STOCK EXHAUST UN-BOLT IT FROM THE CLAMP LOCATED JUST IN FRONT OF THE MUFFLER. CUT OFF YOUR STOCK TAILPIPE JUST BEHIND THE MUFFLER AND REMOVE. LEAVE ALL RUBBER GROMMETS ON THE HANGER. USE WD-40 TO AID IN REMOVAL OF EXHAUST AND HANGERS.



2. INSTALL HEADPIPE #A ONTO STOCK HEADPIPE, LINE UP THE NOTCH AND USE CLAMP #K TO SECURE THE HEADPIPE TO THE FACTORY HEADPIPE. DO NOT TIGHTEN. INSTALL BAND CLAMP #H INTO RUBBER GROMMETS LOCATED JUST ABOVE THE AXLE. DO NOT TIGHTEN. LEAVE LOOSE FOR EASIER INSTALLATION.



3. INSTALL MUFFLER #B BY SLIDING THE OUTLET OF IT THROUGH THE BAND CLAMP, THEN SLIDE IT ONTO THE HEADPIPE 1-1/2" TO 2". USE CLAMP #L TO SECURE THE MUFFLER TO THE HEADPIPE. INSERT HANGER INTO RUBBER GROMMET. DO NOT TIGHTEN. MUFFLER OUTLETS SHOULD BE LEVEL.



4. INSTALL FRONT TAILPIPES #C & #D INTO MUFFLER 1-1/2" TO 2". TAILPIPE #C WILL GO ON THE DRIVERS SIDE AND #D WILL GO ON THE PASSENGER SIDE. USE CLAMP #I TO SECURE THEM. DO NOT TIGHTEN.



5. INSTALL PASSENGER SIDE OVERAXLE TAILPIPE #F. INSERT WELDED HANGER INTO RUBBER GROMMET. USE CLAMP #I TO SECURE TAILPIPES TOGETHER



6. INSTALL HANGER #J INTO HOLE LOCATED ON THE DRIVERS SIDE ABOUT 20" FROM THE REAR OF THE FRAME. USE THE TOP HOLE ON THE HANGER.



7. INSTALL DRIVERSIDE OVERAXLE TAILPIPE #E ONTO FRONT TAILPIPE #C. ROTATE THE PIPE UNTIL IT MEETS UP WITH HANGER #J. USE CLAMP #I TO SECURE TAILPIPE #C & E TOGETHER. DO NOT TIGHTEN. ADJUST YOUR TAILPIPES SO THAT THEY ARE LEVEL. NOW GO BACK AND TIGHTEN ALL CLAMPS STARTING FROM THE FRONT AND WORKING BACK.



8. INSTALL THE STAINLESS TIPS. TO CLEAN TIPS USE A SCOTCH BRITE PAD AND ANY STAINLESS STEEL OR ALUMINUM CLEANER.

"MAKE SURE YOU HAVE A MINIMUM OF 1" CLEARANCE ON ALL PIPES FROM RUBBER BRAKE LINES, FUEL LINES, TIRES, SHOCKS, ETC..."